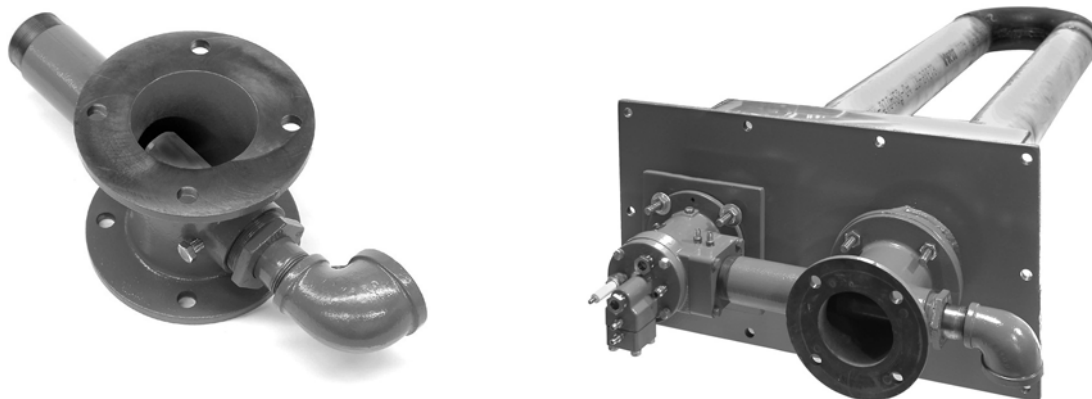


Eclipse E-Jector

Flue Gas Recirculation Device

Model FGR

Version 1



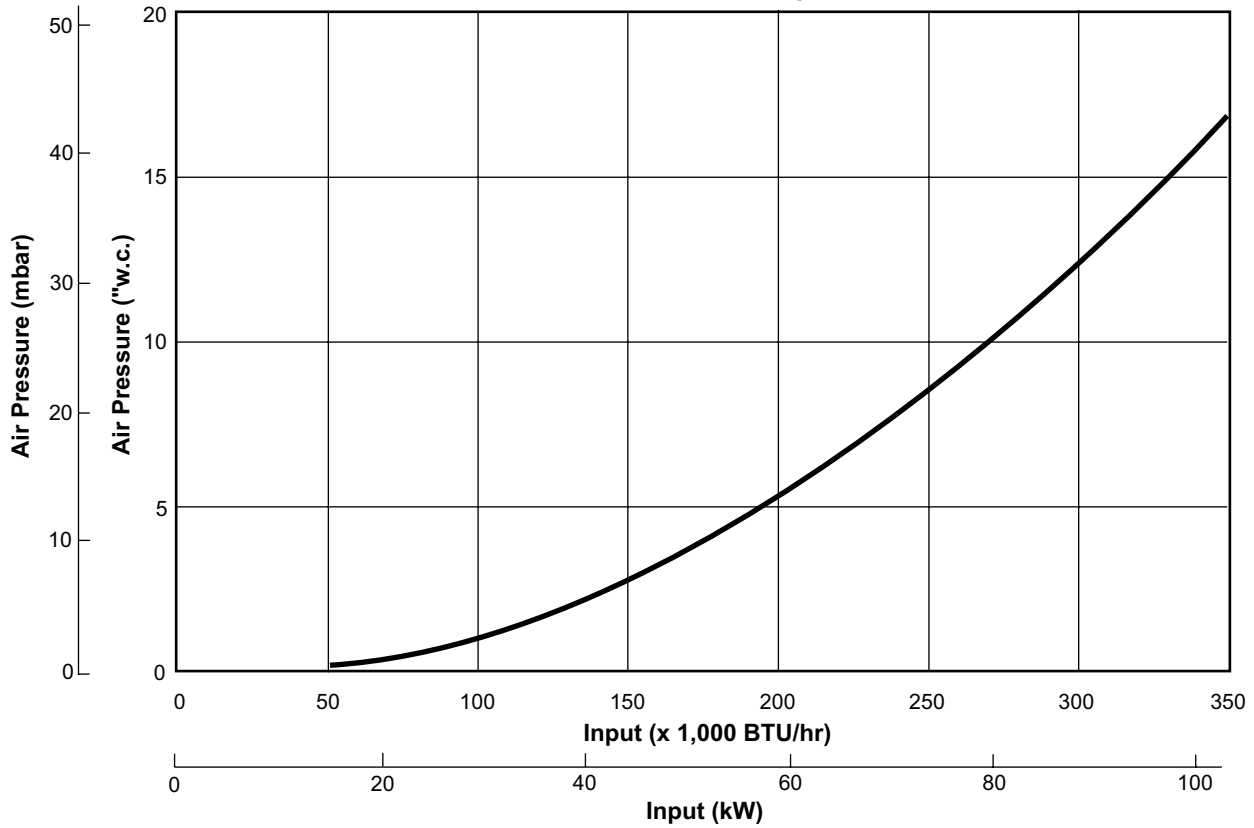
Parameter	Specification
Inner Diameter of Radiant Tube	4" to 6"
Maximum Exhaust Temperature	2100°F (1150°C)
Maximum Capacity*	350,000 BTU/hr (102,5 kW)
Mounts to the Radiant Tube Exhaust or Recuperator Exhaust (if used)	Flanged
Air Inlet	2" NPT
Air Outlet	2" NPSM
Air Pressure Required at FGR Inlet**	36" w.c. (90 mbar) for Maximum Capacity

NOTE: Flue Gas Recirculation Device is designed for use with the Eclipse Tube Firing Burner, refer to Design Guide 310.

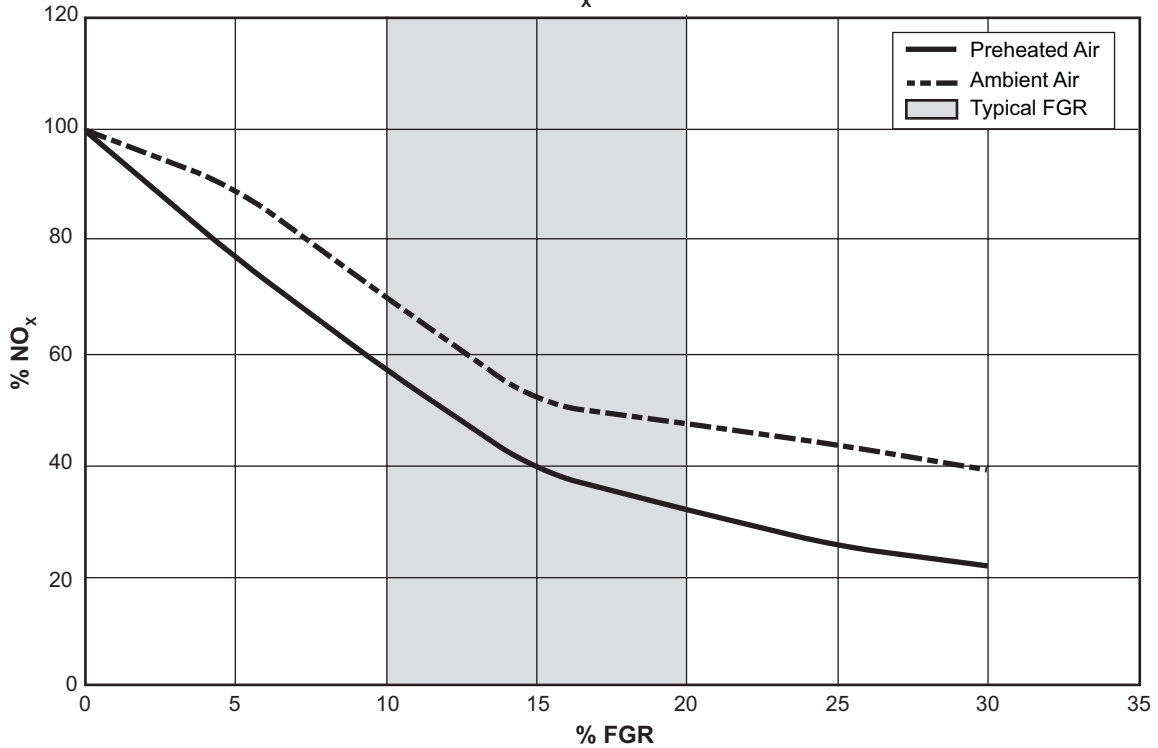
- * Depends on the geometry.
- ** Depends on input and piping losses and if recuperation is used.
- All information based on laboratory testing.
- All inputs based on gross calorific values.
- All pressure drops based on 15% excess combustion air.
- Eclipse reserves the right to change the construction and/or configuration of our products at any time without being obliged to adjust earlier supplies accordingly.
- Do not insulate the FGR device, this may cause the unit to over heat.

Performance Graphs

Air Pressure vs Input



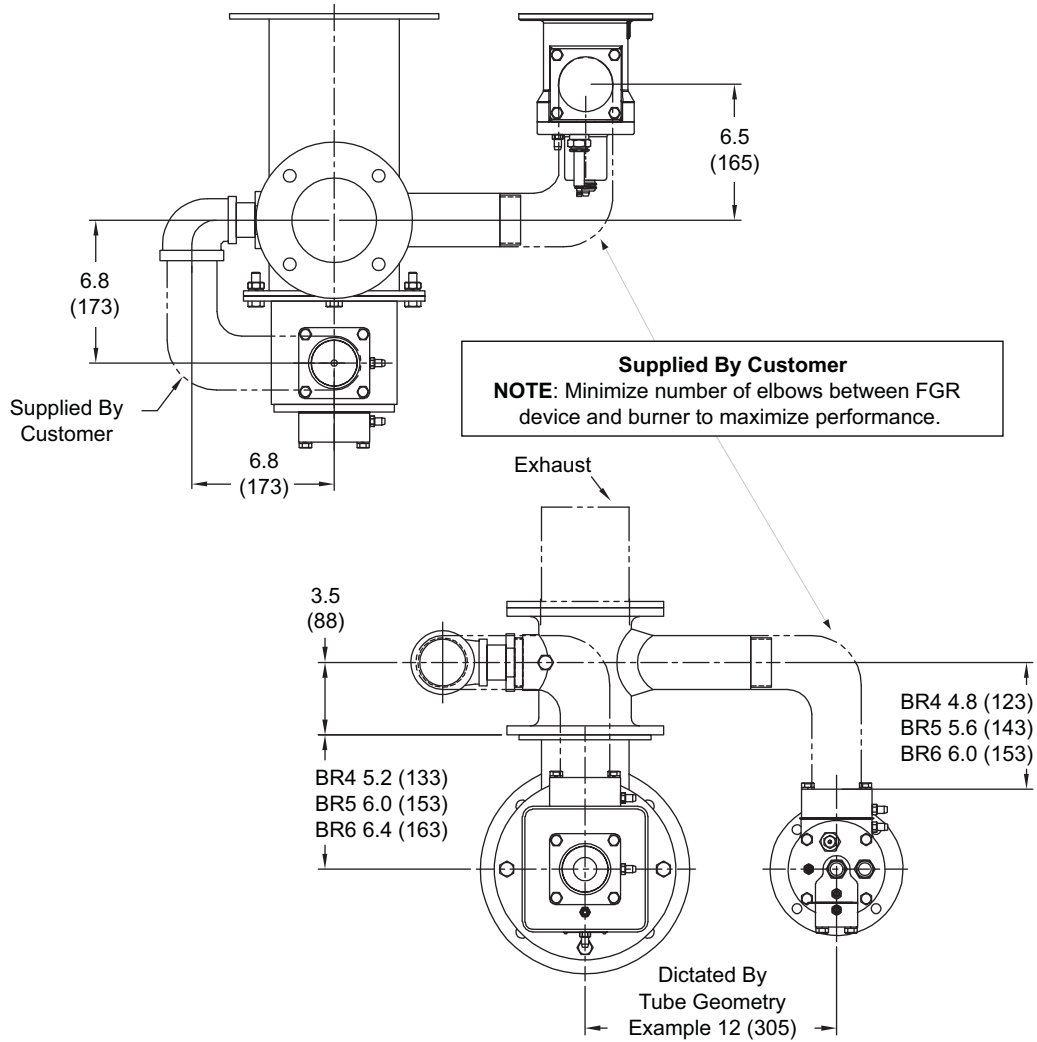
% NO_x with FGR



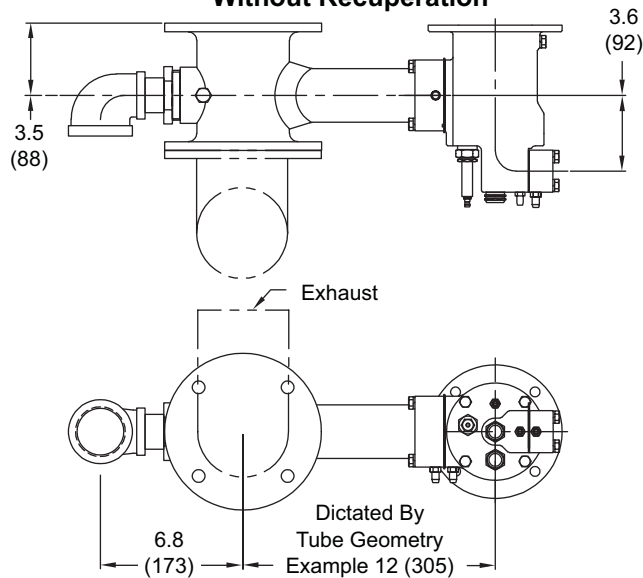
Contact Eclipse for NO_x emission estimates for your specific application.

Installation Options Dimensions in inches (mm)

With Recuperation

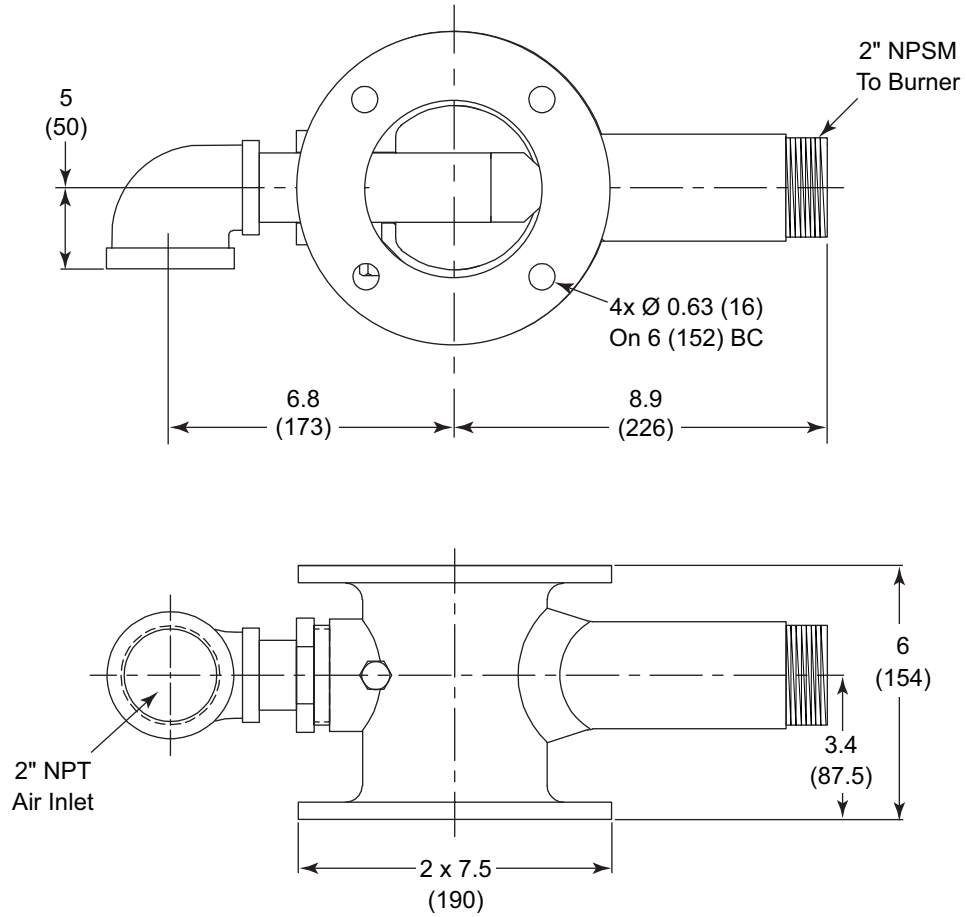


Without Recuperation



Dimensions & Specifications

Dimensions in inches (mm)





Offered By:

Power Equipment Company
2011 Williamsburg Road
Richmond, Virginia 23231
Phone (804) 236-3800
Fax (804) 236-3882

www.peconet.com